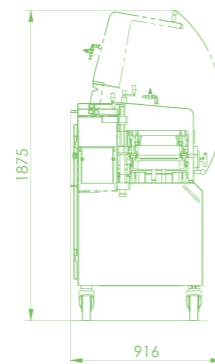
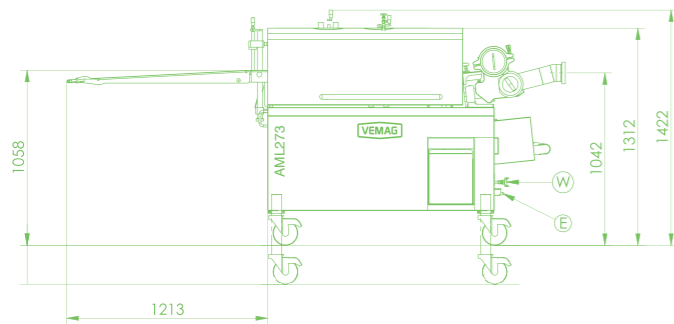


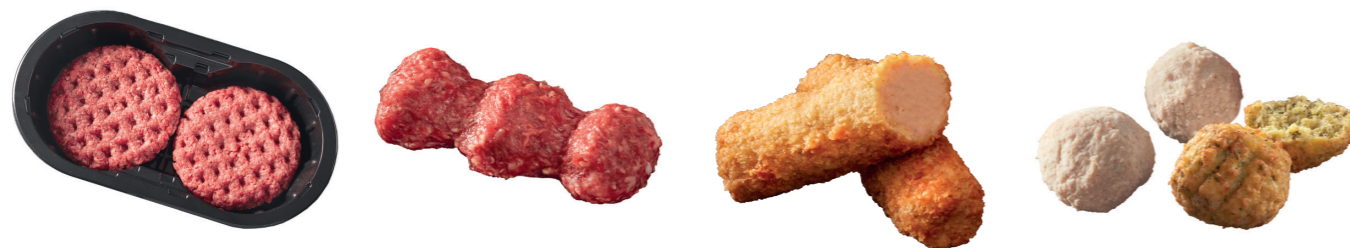
# TECHNICAL SPECIFICATIONS

## Automatic Meatball Loader AML273

Maximum cyclic output	200 cycles/min.
Weight range	1–140 g for balls or dia. 10–60 mm
Shapes	Ball Cylinder Ellipse Drop-shape Burger and Slider Special shapes



Tech. drawing | A = Air connection | E = Electrical connection | W = Water connection



For more information,  
visit [www.vemag.com](http://www.vemag.com)



VEMAG Maschinenbau GmbH  
Weserstr. 32 | 27283 Verden  
Germany | [www.vemag.com](http://www.vemag.com)

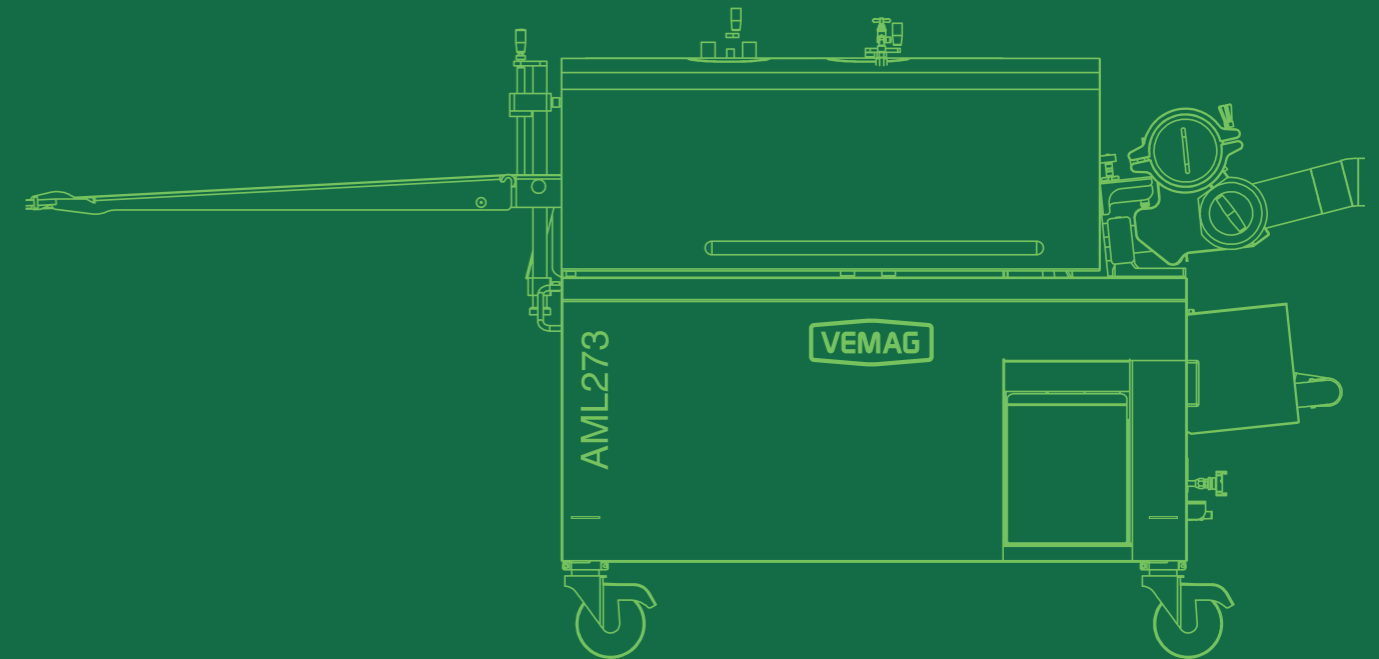


© VEMAG 2020, subject to technical changes. 08/2020



# AML273 Automatic Meatball Loader

## DATA SHEET

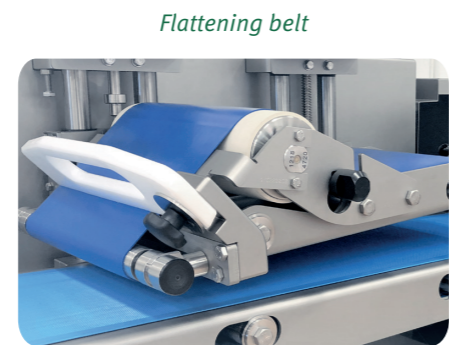


# FULLY AUTOMATIC LOADING INTO TRAYS

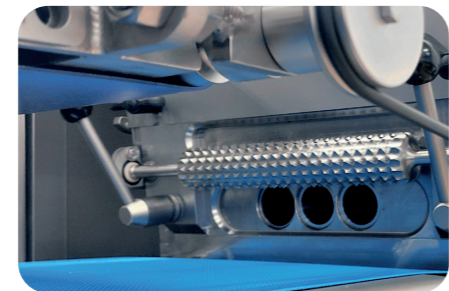
A wide range of products with one attachment

The **AML273** produces meatballs, vegetable balls, cevapcici, Adana kebabs, croquettes and much more at the highest speeds: Perfectly shaped products that appear hand-made. The **AML273** Automatic Meatball Loader stands for the flexible

forming of products with absolutely perfect appearance. The products are placed into trays fully automatically - a unique selling point of the attachment which significantly reduces labor and production cost.



Flattening belt



Patented guiding roller with 3-lane outlet (up to max. 5-lanes)

## BENEFITS AT A GLANCE

- Fully automatic multi-lane placing of products into trays
- Improved product safety thanks to no-touch principle
- Reduced manual labor
- Many different product shapes
- Also for filled products (Coextrusion)
- Interchangeable forming nozzles and forming blade plates
- Extremely short set-up times
- Shearing function of the forming blade plates for perfect shapes and a clean separation of the products
- Consistent quality standard for every product thanks to the use of a grinder

## THE FORMING BLADE PLATES

### The Principle

- The raw material is divided into identical product streams by a filling flow divider and fed through the forming blade plates
- The desired shape is achieved by the complementary movement of the forming blade plates
- The product shape is determined by the nozzels and the forming blade plates
- Round and long shapes are just as possible as drops or oval shapes

### Your Benefit

- Wide range of product shapes
- Highest portioning accuracy regardless of the product shape
- Easy removal of the nozzels and simple exchange of the forming blade plates



## OUTSTANDING TECHNOLOGY

### The Principle

- VEMAG modular design: Line configuration with a suitable vacuum filler feeding the AML273 and a tray buffer downstream of the AML273
- A denester plus conveyor belt ensure tray supply
- The outlets of the AML273 can place up to five products parallel to one another in trays

### Your Benefit

- Highest production output: up to 200 cycles and 5-lanes
- Clean and precise placing of products into trays
- The entire line can be flexibly adjusted to your requirements and products
- Easy cleaning with customary detergents



HPE-Separation Grinder 98 2- Separator 813-AML273-SL305-VPC716