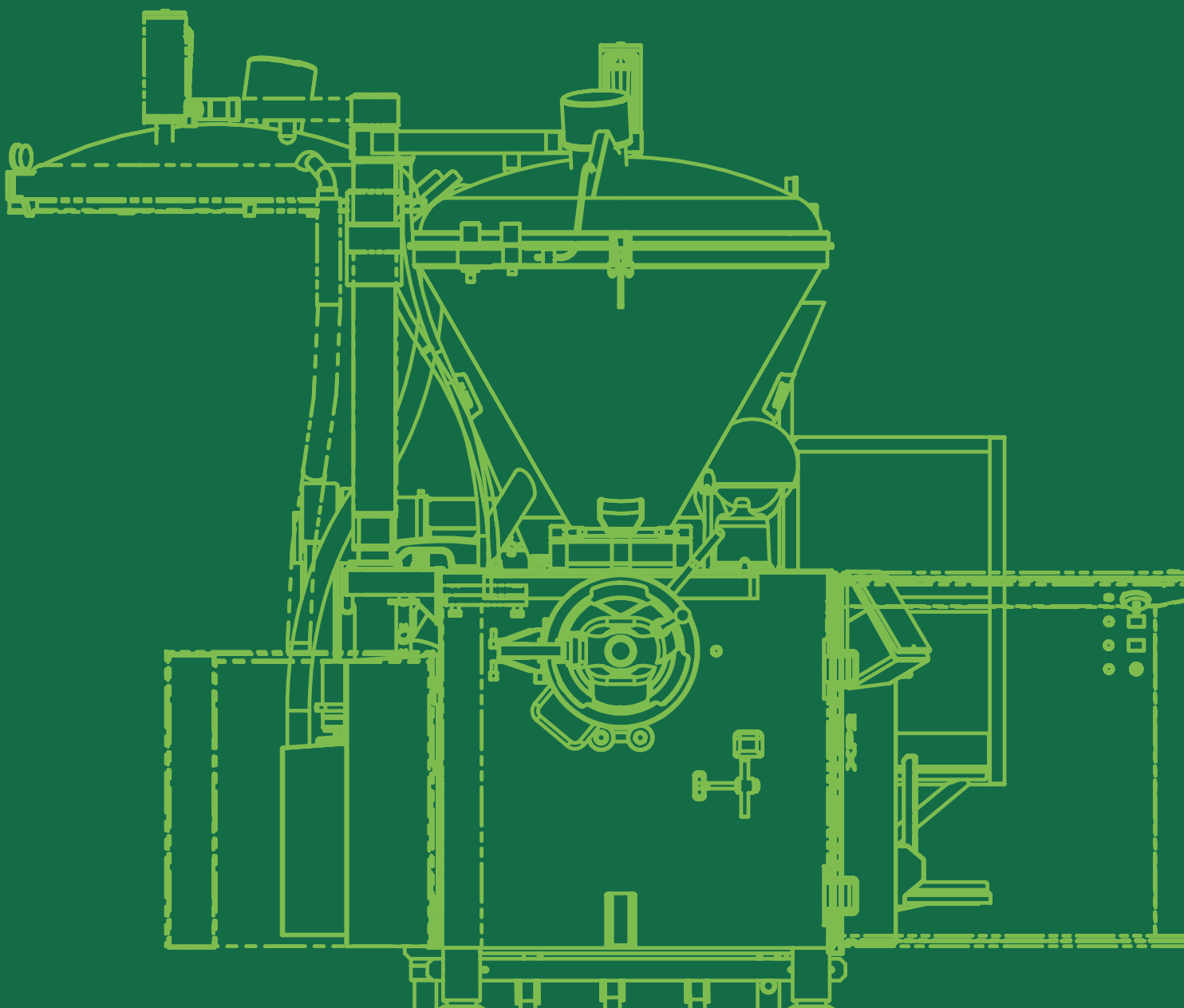




THE XP SERIES

THE MOST POWERFUL AND FASTEST
VACUUM FILLERS IN THE WORLD

DATA SHEET



WE LOVE YOUR RAW MATERIALS

The New Performance Standard for Industry with XP1 and XP2

Benefits at a Glance

- More would be impossible: the XP1 and XP2 are top of their class in output and power for many line applications
- VEMAG Duo Drive: perfect weights and identical lengths thanks to the perfectly continuous feeding
- Combinable with the VEMAG TV149 vacuum hopper for an air-free product appearance
- Intuitive, quick operation using a 12" touch display
- Maximum machine availability through additional protection for all electronic components: VEMAG Box-in-Box
- Optimised double screw bearings guarantee a non-wearing feed system thus minimised service costs
- Easily accessible machine design for optimal hygiene



THE XP 1

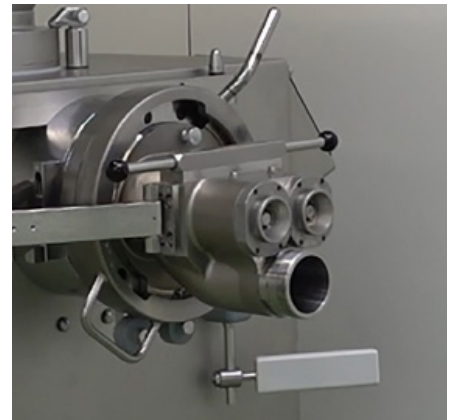
Whole muscle products,
cooked ham and
products in large pieces:
The XP1 - Squaring the
circle: „The continuous
piston“



XP1 Double-Screw

The Principle

- Double screw with large feed volume, up to 5 litres per revolution
- Up to 25 t/h output
- Feed system with contact-free bearings on both sides
- Short product journey with big outlet on filling horn holder



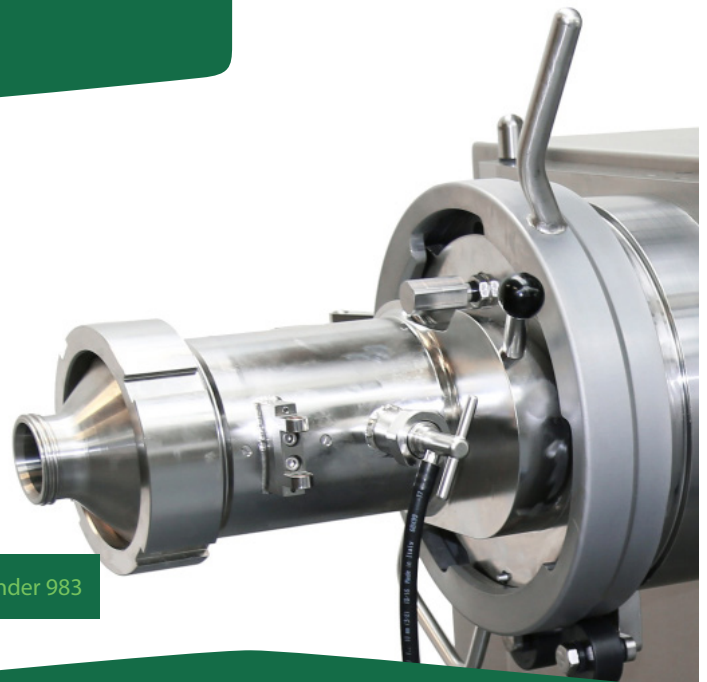
Feed-Screw, Bearing and Filling Horn Holder

The Benefits

- Preserved natural muscle structure guarantees top product quality
- Better yield due to superior binding in end product
- Market leading output of up to 25 t/h
- Maximum productivity due to flexibility for other products such as ham products made from small pieces, cooked sausage etc.

THE XP 2

“The Power Plant”



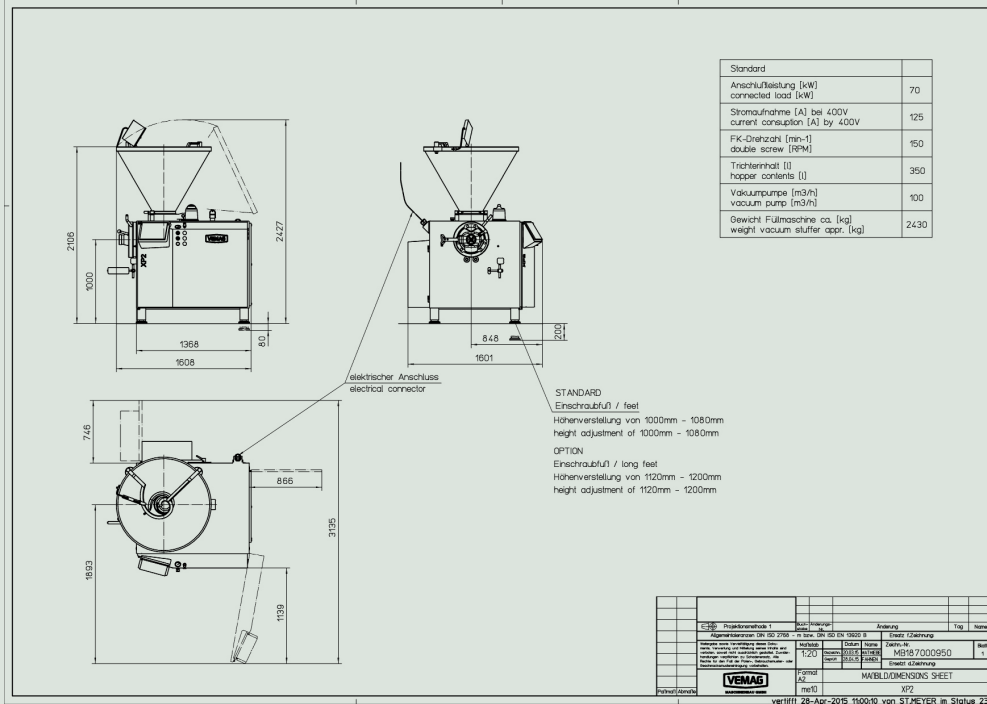
XP2 with Inline Grinder 983

The Principle

- XP 2 works at very low, product-preserving speeds
- Double screw with large volume guarantees high effective output
- Extremely powerful double screw drive with 57 KW power output and 3,660 Nm for conveying very cold, stiff mixtures
- World's most powerful inline grinder as an option offering biggest free space in filling and grinding application

The Benefits

- A machine for numerous products, from dry sausage, to minced meat, to cooked sausage
- Big feed system volume guarantees maximum product protection combined with highly effective performance
- The powerful double screw drive can cope with up to 70% frozen minced meat content (as an example)
- New product standards in the quality of dry sausage such as pepperoni
- Filler-grinder technology for guaranteed consistent particle definition and a more efficient production process
- Continuous separator for more product safety



Technical drawing

TECHNICAL SPECIFICATIONS		
	XP1	XP2
Main drive	28 kW	57 kW
Nominal output	38 kW	70 kW
Connected load	63 A	125 A
Maximum nominal speed	150 U/min	150 rpm
Double screw diameter	160 mm	160 mm
Inlet diameter	180 mm	180 mm
Hopper size	350 l	350 l
Inline grinder Ø 160 mm	-	Optional
Machine height	2.160 mm	2,160 mm
Machine width	1.675 mm	1,601 mm
Machine depth	2.519 mm	1,608 mm
Outlet height	1.000 mm + 80	1,000 mm + 80
Total weight:	2,1 t	2.5 t
Lifting and tilting device	Optional	-
Can be combined with TVS149	Optional	Optional
Filling output	25 t/h	12 t/h