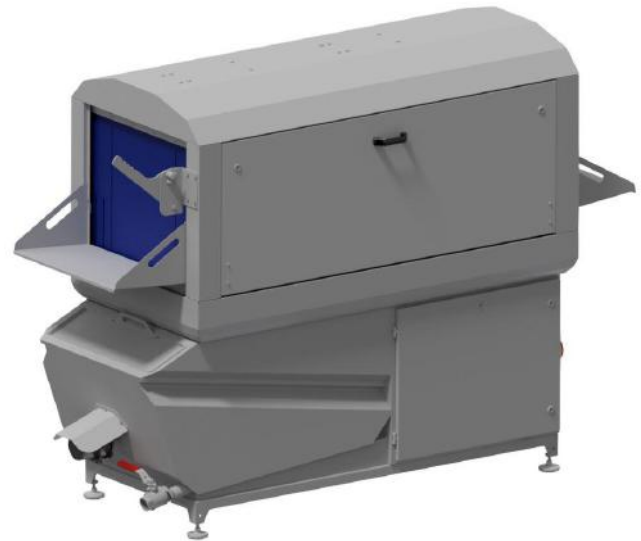


## 1. Crate washer HLCV Series



### Crate dimension

L x W x H: 600 x 400 x from 100 to 300mm

Transportation: Longitudinal direction

<b>HLCV.1</b> 1201-100-9-0100	<b>Capacity: 150 per hour</b>
	<b>With step switch Option 100 / 150 / 200 per hour</b>

**Compact conveying crate washer** in a hygienic design, with integrated main wash and rinsing zone, for fast and effective cleaning of **slight** to **moderately** contaminated plastic crates

The unit is divided into a main wash and a rinsing zone.

In the main wash zone of the crate washer the crates are cleaned with **circulating water** which is invariably kept at the desired temperature by the **installed tank heater**. The water of the main wash zone is constantly filtered by the HEIM-EDT-Screen-Tech™ filtration system.

In the rinsing zone the crates are rinsed with clean fresh water and subsequently conducted into the tank of the main wash zone to be re-used. This procedure achieves superb wash results while minimizing water, energy and chemicals' consumption.

In order to ensure an optimal cleaning of all faces, the crates are transported by a conveyor chain at even distances through the unit; the installed rotatable Clip-eyelet flat nozzles ensure an efficient cleaning of the crates

### Technical Data Crate washer:

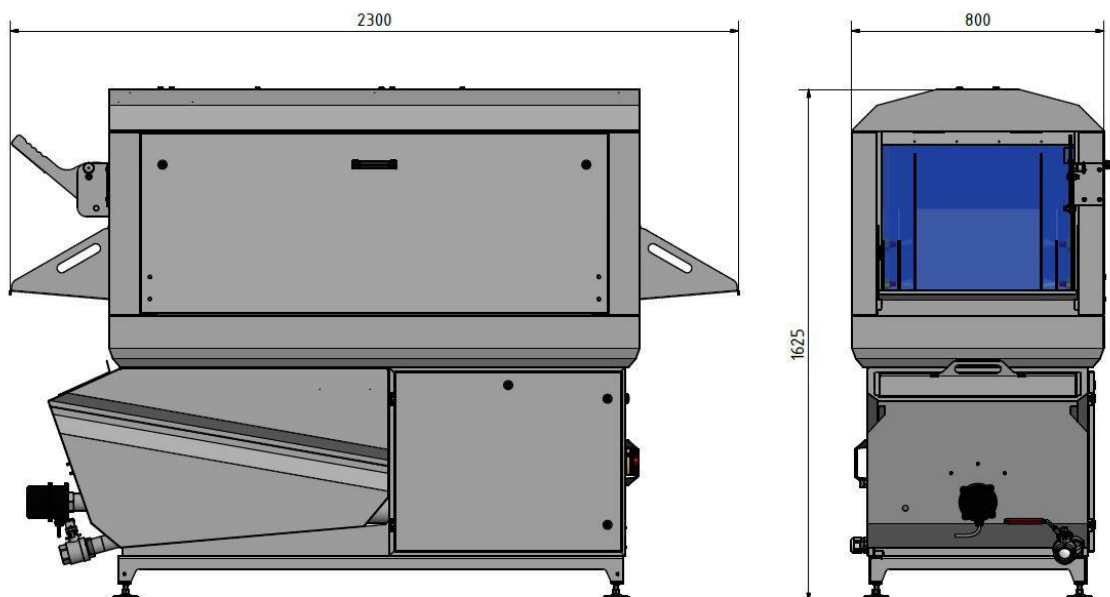
Machine Dimensions L x W x H	: 2300 x 800 x 1625mm
Material	: AISI 304 T=2,0mm
Belt speed	: 1,75 mtr./min
Belt drive	: 0,6kW
Pump Type	: EBARA DWO/I300
Power	: 2,2kW
Water circulation through the washing nozzles	: 500 l/min

# Industrial Washing machines



Water pressure at the nozzle	: 2,0 bar
Tank capacity	: 200 litre
Level monitoring	: 2 x Niveau sensor (min./max.)
Water consumption approx.	: 0,5 – 0,6 l/crate
Tank heating	: 1 x 9 kW – Electrical screw-in heater
Washing temperature	: 30- 55°C adjustable
Nozzle	: Clip-eyelet, rotatable flat jet nozzles
Filter system	: AISI 304 removable insert filter, 2mm perforation
Rinsing	: 1 x circumferential nozzle ring
Nozzle	: Brass flat jet nozzles
Rinsing temperature recommended	: 50 - 85 °C (provision by the customer)
Crate downholder	: Height adjustable
Directional control	: Integrated in the hold-down device
Conveying system	: transport chain with carrier
Electrical connection	: 400V / 50Hz, 3Ph + N + PE
Control voltage	: 24V
Total voltage	: 12 kW
Water connection	: 2 x 1/2" 1- 10 bar, cold or warm water
Tank overflow	: DN50
Tank emptying	: 1 x 1 ½ inch ball valve

**For available options, see the supplementary sheet from the HLCV. model series**





### Crate dimension

L x W x H: 600 x 400 x from 100 to 300mm

Transportation: Longitudinal direction

<b>HLCV-T</b> 1201-100-9-0150	<b>Capacity: 150 per hour</b>
	<b>With step switch Option 100 / 150 / 200 per hour</b>

**Compact conveying crate washers** in a hygienic design, with integrated main wash, rinsing zone and drying zone, for fast and effective cleaning of **slight to moderately** contaminated plastic crates

The unit is divided into a main wash and a rinsing zone.

In the main wash zone the crates are cleaned with circulating water which is invariably kept at the desired temperature by the **installed tank heater**. The water of the main wash zone is constantly filtered by the Heim-EDT-Screen-Tech" filtration system.

In the rinsing zone of the crate washer the crates are rinsed with clean fresh water and subsequently conducted into the tank of the main wash zone to be re-used. This procedure achieves superb wash results while minimizing water, energy and chemicals' consumption.

Afterwards follow the blow off zone. The crates are **blown off** with cold air from all sides by a high pressure blower with high drying efficiency.

In order to ensure an optimal cleaning of all faces, the crates are transported by a conveyor chain at even distances through the unit; the installed rotatable Clip-eyelet flat nozzles ensure an efficient cleaning of the crates

## Technical Data Crate washer:

Machine Dimensions L x W x H	: 3300 x 800 x 1600mm
Material	: AISI 304 T=2,0mm
Belt speed	: 1,75 mtr./min
Belt drive	: 0,6kW
Pump Type	: EBARA DWO/I300

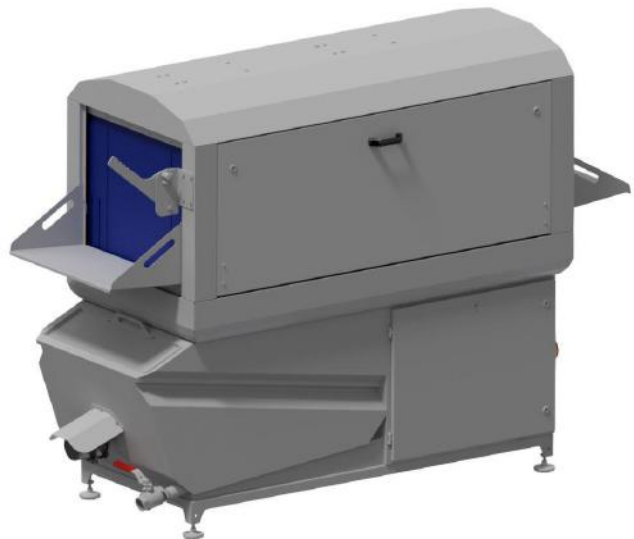
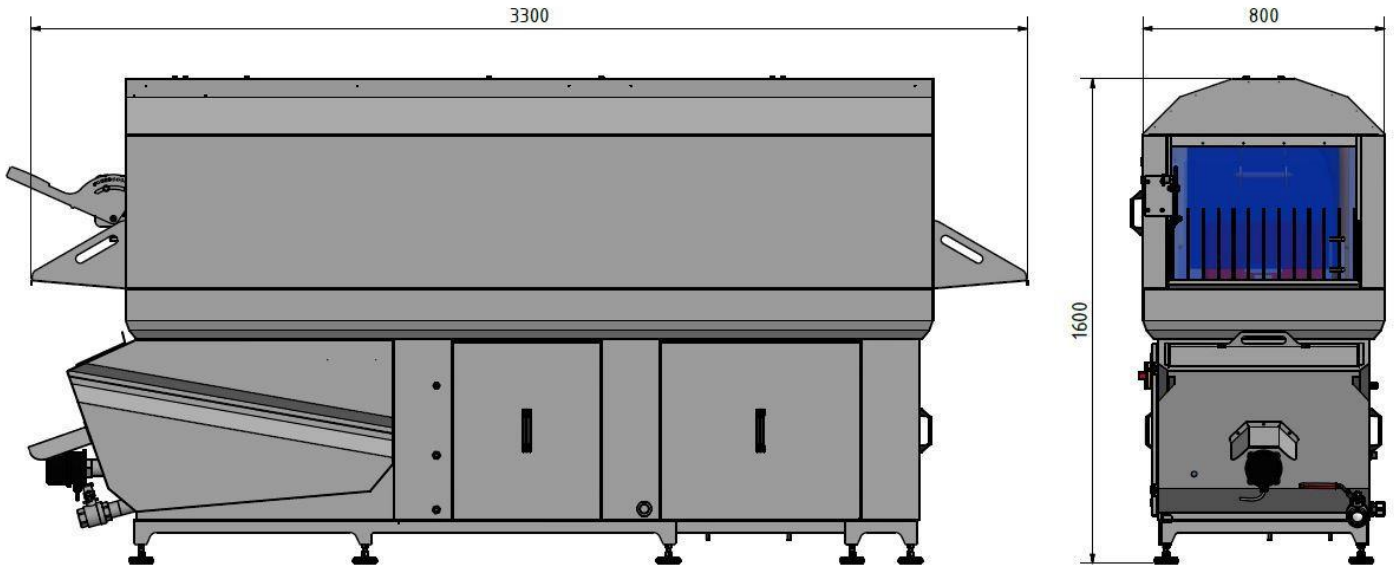
# Industrial Washing machines



Power	: 2,2kW
<b>Water circulation through the washing nozzles</b>	<b>: 500 l/min</b>
Water pressure at the nozzle	: 2,0 bar
Tank capacity	: 200 litre
Level monitoring	: 2 x Niveau sensor (min./max.)
Water consumption approx.	: 0,5 – 0,6 l/crate
Tank heating	: 1 x 9 kW – Electrical screw-in heater
Washing temperature	: 30- 55°C adjustable
Nozzle	: Clip-eyelet, rotatable flat jet nozzles
Filter system	: AISI 304 removable insert filter, 2mm perforation
Rinsing	: 1 x circumferential nozzle ring
Nozzle	: Brass flat jet nozzles
Rinsing temperature recommended	: 50 - 85 °C (provision by the customer)
Blower	: 1 x 5,5 kW ELEKTOR High pressure (32m <sup>3</sup> /min)
Crate downholder	: Height adjustable
Directional control	: Integrated in the hold-down device
Conveying system	: transport chain with carrier
Electrical connection	: 400V / 50Hz, 3Ph + N + PE
Control voltage	: 24V
Total voltage	: 12 kW
Water connection	: 2 x 1/2" 1- 10 bar, cold or warm water
Tank overflow	: DN50
Tank emptying	: 1 x 1 ½ inch ball valve

**For available options, see the supplementary sheet from the HLCV. model series**





### Crate dimension

L x W x H: 600 x 400 x from 100 to 300mm

Transportation: Longitudinal direction

<b>HLCV.2</b> 1201-200-9-0100	<b>Capacity: 250 per hour</b>
	<b>With step switch Option 200 / 250 / 300 per hour</b>

**Compact conveying crate washing machine** in a hygienic design, with integrated main wash and rinsing zone, for fast and effective cleaning of **slight to moderately** contaminated plastic crates

The unit is divided into a main wash and a rinsing zone.

# Industrial Washing machines



In the main wash zone the crates are cleaned with **circulating water** which is invariably kept at the desired temperature by the **installed tank heater**. The water of the main wash zone is constantly filtered by the "HEIM-EDT-Screen-Tech" filtration system.

In the rinsing zone the crates are rinsed with clean fresh water and subsequently conducted into the tank of the main wash zone to be re-used. This procedure achieves superb wash results while minimizing water, energy and chemicals' consumption.

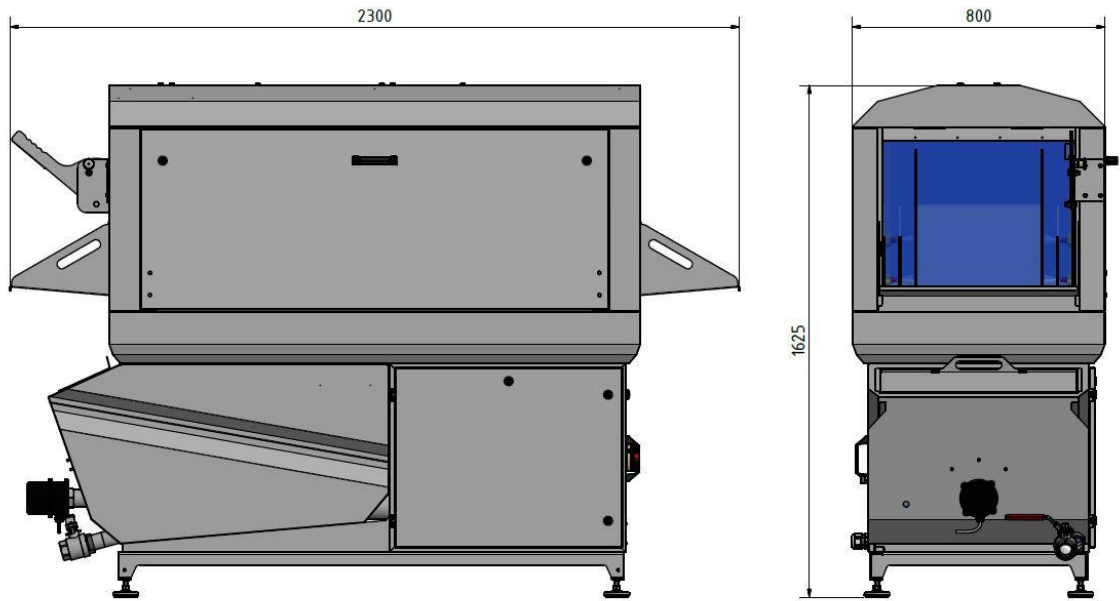
In order to ensure an optimal cleaning of all faces, the crates are transported by a conveyor chain at even distances through the unit; the installed rotatable Clip-eyelet flat nozzles ensure an efficient cleaning of the crates

## Technical Data Crate washer:

Machine Dimensions L x W x H	: 2300 x 800 x 1625mm
Material	: AISI 304 T=2,0mm
Belt speed	: 2,92 mtr./min
Belt drive	: 0,6kW
Pump Type	: EBARA DWO/I400
Power	: 3,0kW
<b>Water circulation through the washing nozzles</b>	<b>: 600 l/min</b>
Water pressure at the nozzle	: 2,5 bar
Tank capacity	: 200 litre
Level monitoring	: 2 x Niveau sensor (min./max.)
Water consumption approx.	: 0,5 – 0,6 l/crate
Tank heating	: 1 x 9 kW – Electrical screw-in heater
Washing temperature	: 30- 55°C adjustable
Nozzle	: Clip-eyelet, rotatable flat jet nozzles
Filter system	: AISI 304 removable insert filter, 2mm perforation
Rinsing	: 1 x circumferential nozzle ring
Nozzle	: Brass flat jet nozzles
Rinsing temperature recommended	: 50 - 85 °C (provision by the customer)
Crate downholder	: Height adjustable
Directional control	: Integrated in the hold-down device
Conveying system	: transport chain with carrier
Electrical connection	: 400V / 50Hz, 3Ph + N + PE
Control voltage	: 24V
Total voltage	: 13 kW
Water connection	: 2 x 1/2" 1- 10 bar, cold or warm water
Tank overflow	: DN50
Tank emptying	: 1 x 1 ½ inch ball valve

**For available options, see the supplementary sheet from the HLCV. model series**







## Crate dimension

L x W x H: 600 x 400 x from 100 to 300mm

Transportation: Longitudinal direction

HLCV.2-T 1201-200-9-0150	Capacity: <b>250</b> per hour
	With step switch Option <b>200 / 250 / 300</b> per hour

**Compact conveying crate washing machine** in a hygienic design, with integrated main wash, rinsing zone and drying zone, for fast and effective cleaning of **slight to moderately** contaminated plastic crates

The crate washer is divided into a main wash and a rinsing zone.

In the main wash zone the crates are cleaned with circulating water which is invariably kept at the desired temperature by the **installed tank heater**. The water of the main wash zone is constantly filtered by the Heim-EDT-Screen-Tech™ filtration system.

In the rinsing zone the crates are rinsed with clean fresh water and subsequently conducted into the tank of the main wash zone to be re-used. This procedure achieves superb wash results while minimizing water, energy and chemicals' consumption.

Afterwards follow the blow off zone. The crates are **blown off** with cold air from all sides by a high pressure blower with high drying efficiency.

In order to ensure an optimal cleaning of all faces, the crates are transported by a conveyor chain at even distances through the unit; the installed rotatable Clip-eyelet flat nozzles ensure an efficient cleaning of the crates

## Technical Data Crate washer:

Machine Dimensions L x W x H	: 3300 x 800 x 1600 mm
Material	: AISI 304 T=2,0mm
Belt speed	: 2,92 mtr./min
Belt drive	: 0,6kW
Pump Type	: EBARA DWO/I400
Power	: 3,0kW
<b>Water circulation through the washing nozzles</b>	<b>: 600 l/min</b>

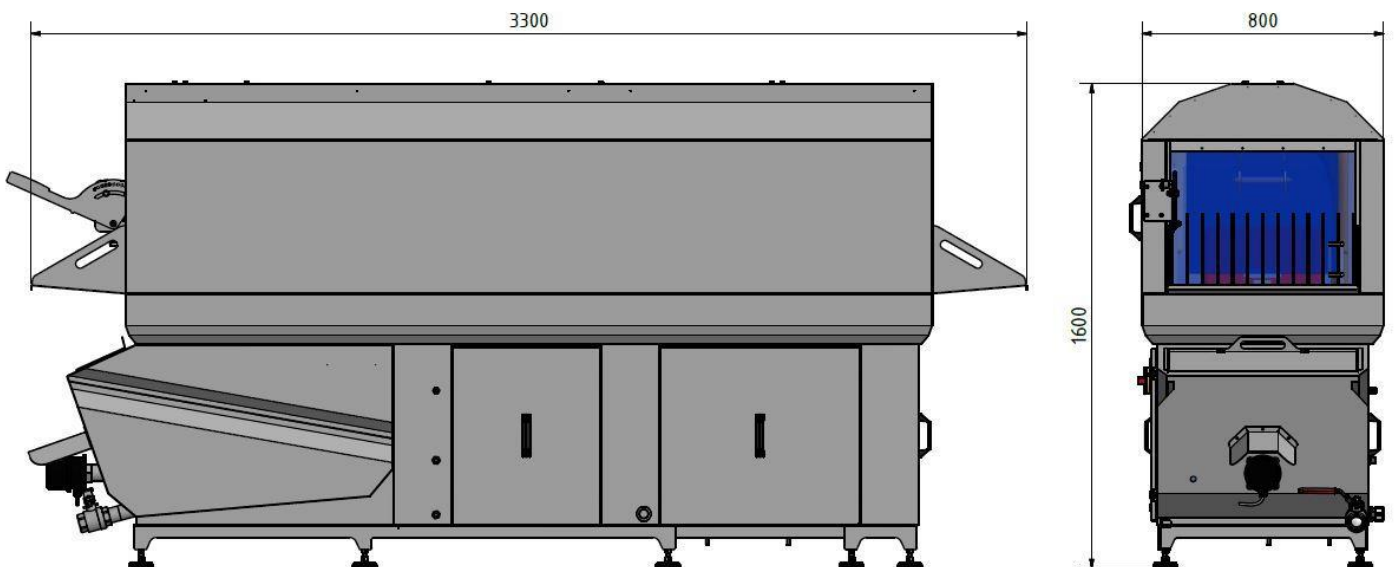


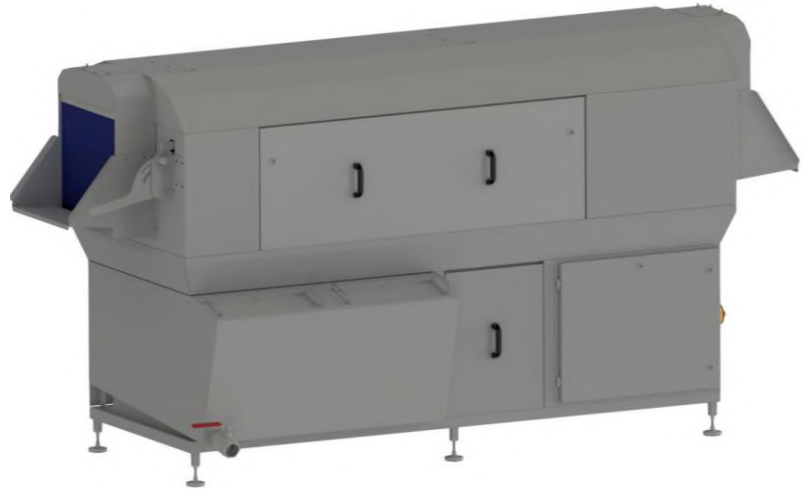
# Industrial Washing machines



Water pressure at the nozzle	: 2,5 bar
Tank capacity	: 200 litre
Level monitoring	: 2 x Niveau sensor (min./max.)
Water consumption approx.	: 0,5 – 0,6 l/crate
Tank heating	: 1 x 9 kW – Electrical screw-in heater
Washing temperature	: 30- 55°C adjustable
Nozzle	: Clip-eyelet, rotatable flat jet nozzles
Filter system	: AISI 304 removable insert filter, 2mm perforation
Rinsing	: 1 x circumferential nozzle ring
Nozzle	: Brass flat jet nozzles
Rinsing temperature recommended	: 50 - 85 °C (provision by the customer)
Blower	: 1 x 5,5 kW ELEKTOR High pressure (32m <sup>3</sup> /min)
Crate downholder	: Height adjustable
Directional control	: Integrated in the hold-down device
Conveying system	: transport chain with carrier
Electrical connection	: 400V / 50Hz, 3Ph + N + PE
Control voltage	: 24V
Total voltage	: 13 kW
Water connection	: 2 x 1/2" 1- 10 bar, cold or warm water
Tank overflow	: DN50
Tank emptying	: 1 x 1 ½ inch ball valve

**For available options, see the supplementary sheet from the HLCV. model series**





## Crate dimension

L x W x H: 600 x 400 x from 100 to 300mm

Transportation: Longitudinal direction

<b>HLCV.3</b> 1201-300-9-0100	<b>Capacity:</b> <b>400</b> per hour
	With step switch Option <b>300 / 400 / 500</b> per hour

**Compact conveying crate washing machine** in a hygienic design, with integrated main wash and rinsing zone, for fast and effective cleaning of **slight** to **moderately** contaminated plastic crates

The unit is divided into a main wash and a rinsing zone.

In the main wash zone the crates are cleaned with **circulating water** which is invariably kept at the desired temperature by the **installed tank heater**. The water of the main wash zone is constantly filtered by the "HEIM-EDT-Screen-Tech" filtration system.

In the rinsing zone the crates are rinsed with clean fresh water and subsequently conducted into the tank of the main wash zone to be re-used. This procedure achieves superb wash results while minimizing water, energy and chemicals' consumption.

In order to ensure an optimal cleaning of all faces, the crates are transported by a conveyor chain at even distances through the unit; the installed rotatable Clip-eyelet flat nozzles ensure an efficient cleaning of the crates

## Technical Data Crate washer:

Machine Dimensions L x W x H	: 3300 x 1200 x 1650mm
Material	: AISI 304 T=2,5mm
Belt speed	: 4,67 mtr./min
Belt drive	: 0,6kW
Pump Type	: EBARA 3 40
Power	: 5,5kW
<b>Water circulation through the washing nozzles</b>	<b>: 700 l/min</b>

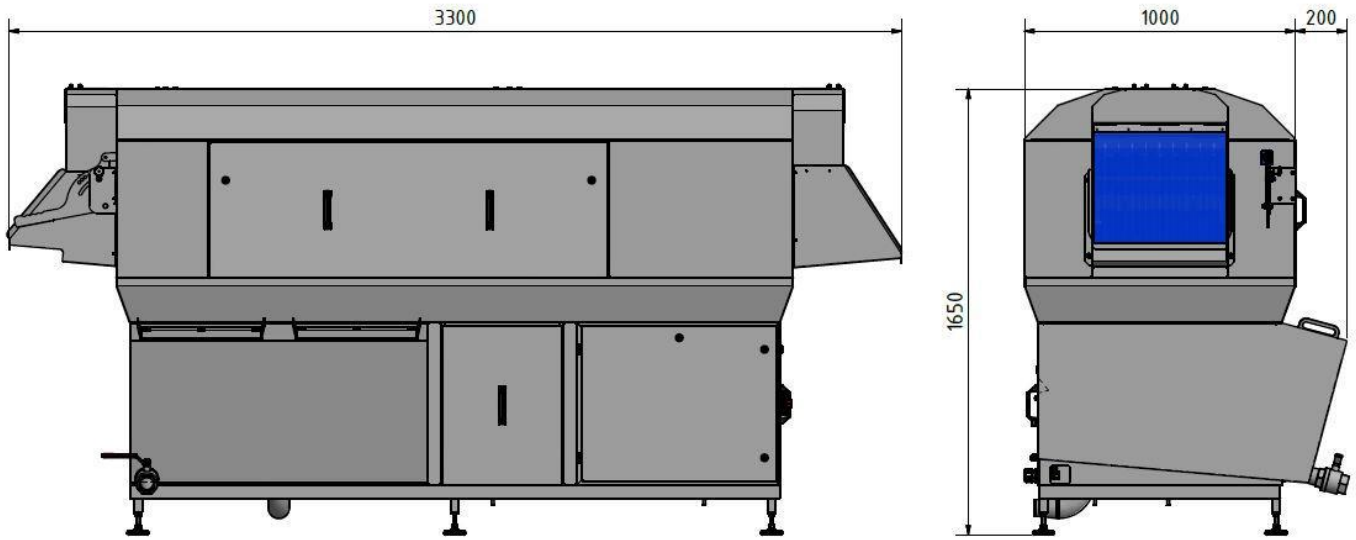
# Industrial Washing machines



Water pressure at the nozzle	: 4,5 bar
Tank capacity	: 300 litre
Level monitoring	: 2 x Niveau sensor (min./max.)
Water consumption approx.	: 0,5 – 0,6 l/crate
Tank heating	: 3 x 9kW – Electrical screw-in heater
Washing temperature	: 30- 55°C adjustable
Nozzle	: Clip-eyelet, rotatable flat jet nozzles
Filter system	: AISI 304 removable insert filter, 2mm perforation
Rinsing	: 1 x circumferential nozzle ring
Nozzle	: Brass flat jet nozzles
Rinsing temperature recommended	: 50 - 85 °C (provision by the customer)
Crate downholder	: Height adjustable
Directional control	: Integrated in the hold-down device
Conveying system	: transport chain with carrier
Electrical connection	: 400V / 50Hz, 3Ph + N + PE
Control voltage	: 24V
Total voltage	: 33kW
Water connection	: 2x 1/2" 1- 10 bar, cold or warm water
Tank overflow	: DN50
Tank emptying	: 1 x 1 ½ inch ball valve

**For available options, see the supplementary sheet from the HLCV. model series**





### Crate dimension

L x W x H: 600 x 400 x from 100 to 300mm

Transportation: Longitudinal direction

HLCV.3-T 1201-300-9-0150	Capacity: <b>400</b> per hour
	With step switch Option <b>300 / 400 / 600</b> per hour

**Compact conveying crate washer** in a hygienic design, with integrated main wash, rinsing zone and drying zone, for fast and effective cleaning of **slight** to **moderately** contaminated plastic crates

The unit is divided into a main wash and a rinsing zone.

In the main wash zone the crates are cleaned with circulating water which is invariably kept at the desired temperature by the **installed tank heater**. The water of the main wash zone is constantly filtered by the Heim-EDT-Screen-Tech™ filtration system.

# Industrial Washing machines



In the rinsing zone the crates are rinsed with clean fresh water and subsequently conducted into the tank of the main wash zone to be re-used. This procedure achieves superb wash results while minimizing water, energy and chemicals' consumption.

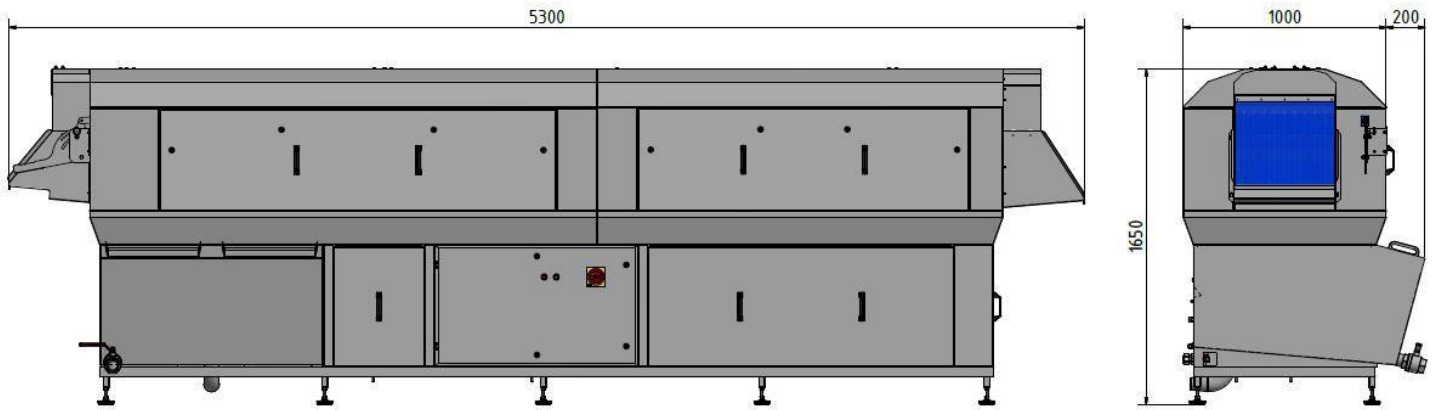
Afterwards follow the blow off zone. The crates are **blown off** with cold air from all sides by a high pressure blower with high drying efficiency.

In order to ensure an optimal cleaning of all faces, the crates are transported by a conveyor chain at even distances through the unit; the installed rotatable Clip-eyelet flat nozzles ensure an efficient cleaning of the crates

## Technical Data Crate washer:

Machine Dimensions L x W x H	: 5300 x 1200 x 1650mm
Material	: AISI 304 T=2,0mm
Belt speed	: 4,67mtr./min
Belt drive	: 0,6kW
Pump Type	: EBARA 3 40
Power	: 5,5kW
<b>Water circulation through the washing nozzles</b>	<b>: 700 l/min</b>
Water pressure at the nozzle	: 4,5 bar
Tank capacity	: 300 litre
Level monitoring	: 2 x Niveau sensor (min./max.)
Water consumption approx.	: 0,5 – 0,6 l/crate
Tank heating	: 3 x 9kW – Electrical screw-in heater
Washing temperature	: 30- 55°C adjustable
Nozzle	: Clip-eyelet, rotatable flat jet nozzles
Filter system	: AISI 304 removable insert filter, 2mm perforation
Rinsing	: 1 x circumferential nozzle ring
Nozzle	: Brass flat jet nozzles
Rinsing temperature recommended	: 50 - 85 °C (provision by the customer)
Blower	: 1 x 5,5 kW ELEKTOR High pressure (32m <sup>3</sup> /min)
Crate downholder	: Height adjustable
Directional control	: Integrated in the hold-down device
Conveying system	: transport chain with carrier
Electrical connection	: 400V / 50Hz, 3Ph + N + PE
Control voltage	: 24V
Total voltage	: 38 kW
Water connection	: 1/2" 1- 10 bar, cold or warm water
Tank overflow	: DN50
Tank emptying	: 1 x 1 ½ inch ball valve

**For available options, see the supplementary sheet from the HLCV. model series**





## Crate dimension

L x W x H: 600 x 400 x from 100 to 300mm

Transportation: Longitudinal direction

<b>HLCV.3</b> 1201-300-9-0200	<b>Capacity: 600 per hour</b>
	<b>With step switch Option 500 / 600 / 700 per hour</b>

**Compact conveying crate washing machine** in a hygienic design, with integrated main wash and rinsing zone, for fast and effective cleaning of **slight** to **moderately** contaminated plastic crates

The unit is divided into a main wash and a rinsing zone.

In the main wash zone of the crate washer the crates are cleaned with **circulating water** which is invariably kept at the desired temperature by the **installed tank heater**. The water of the main wash zone is constantly filtered by the "HEIM-EDT-Screen-Tech" filtration system.

In the rinsing zone of the crate washers the crates are rinsed with clean fresh water and subsequently conducted into the tank of the main wash zone to be re-used. This procedure achieves superb wash results while minimizing water, energy and chemicals' consumption.

In order to ensure an optimal cleaning of all faces, the crates are transported by a conveyor chain at even distances through the unit; the installed rotatable Clip-eyelet flat nozzles ensure an efficient cleaning of the crates

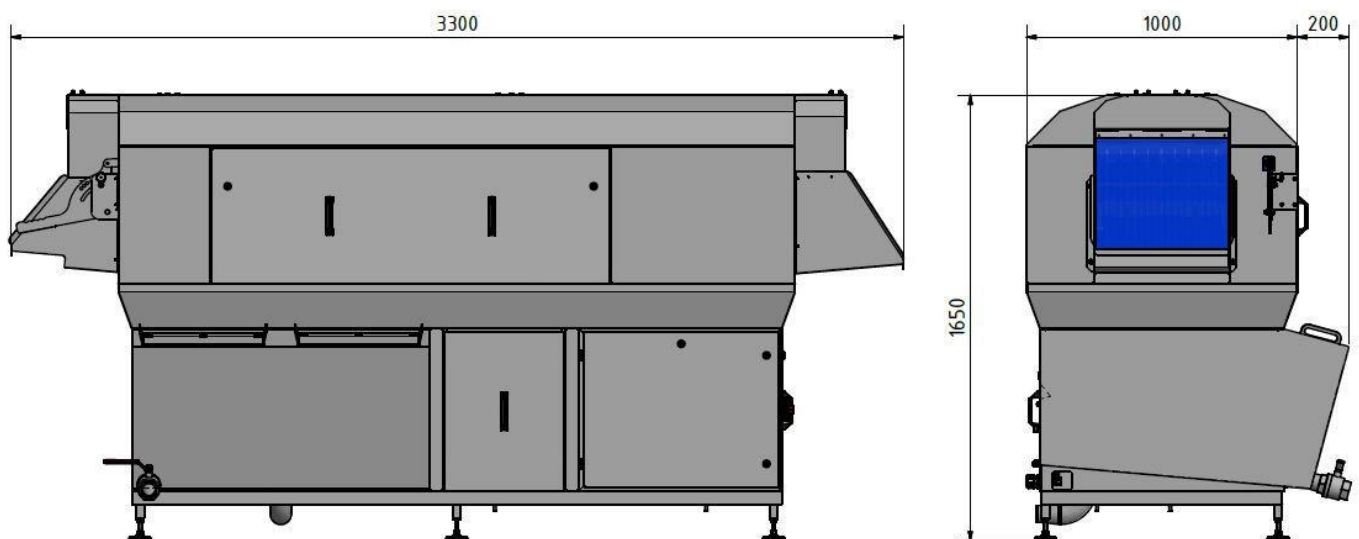
## Technical Data crate washer:

Machine Dimensions L x W x H	: 3300 x 1200 x 1650 mm
Material	: AISI 304 T=2,5mm
Belt speed	: 7 mtr./min
Belt drive	: 0,6kW
Pump Type	: EBARA 3 40
Power	: 7,5 kW
<b>Water circulation through the washing nozzles</b>	<b>: 700 l/min</b>

# Industrial Washing machines

Water pressure at the nozzle	: 5,5 bar
Tank capacity	: 300 litre
Level monitoring	: 2 x Niveau sensor (min./max.)
Water consumption approx.	: 0,5 – 0,6 l/crate
Tank heating	: 4 x 9,0 kW – Electrical screw-in heater
Washing temperature	: 30- 55°C adjustable
Nozzle	: Clip-eyelet, rotatable flat jet nozzles
Filter system	: AISI 304 removable insert filter, 2mm perforation
Rinsing	: 1 x circumferential nozzle ring
Nozzle	: Brass flat jet nozzles
Rinsing temperature recommended	: 50 - 85 °C (provision by the customer)
Crate downholder	: Height adjustable
Directional control	: Integrated in the hold-down device
Conveying system	: transport chain with carrier
Electrical connection	: 400V / 50Hz, 3Ph + N + PE
Control voltage	: 24V
Total voltage	: 44kW
Water connection	: 2x 1/2" 1- 10 bar, cold or warm water
Tank overflow	: DN50
Tank emptying	: 1 x 1 ½ inch ball valve

**For available options, see the supplementary sheet from the HLCV. model series**







### Crate dimension

L x W x H: 600 x 400 x from 100 to 300mm

Transportation: Longitudinal direction

HLCV.3-T 1201-300-9-0250	Capacity: <b>600</b> per hour
	With step switch Option <b>500 / 600 / 700</b> per hour

**Compact conveying crate washer machine** in a hygienic design, with integrated main wash, rinsing zone and drying zone, for fast and effective cleaning of **slight to moderately** contaminated plastic crates

The unit is divided into a main wash and a rinsing zone.

In the main wash zone the crates are cleaned with circulating water which is invariably kept at the desired temperature by the **installed tank heater**. The water of the main wash zone is constantly filtered by the Heim-EDT-Screen-Tech™ filtration system.

In the rinsing zone the crates are rinsed with clean fresh water and subsequently conducted into the tank of the main wash zone to be re-used. This procedure achieves superb wash results while minimizing water, energy and chemicals' consumption.

Afterwards follow the blow off zone. The crates are **blown off** with cold air from all sides by a high pressure blower with high drying efficiency.

In order to ensure an optimal cleaning of all faces, the crates are transported by a conveyor chain at even distances through the unit; the installed rotatable Clip-eyelet flat nozzles ensure an efficient cleaning of the crates

## Technical Data Crate washer:

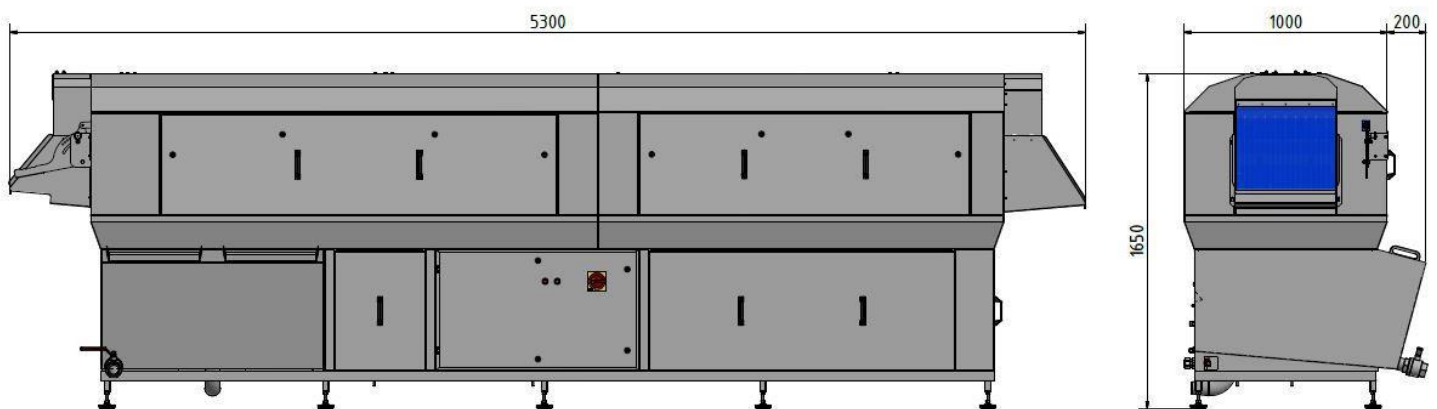
Machine Dimensions L x W x H	: 5300 x 1200 x 1650mm
Material	: AISI 304 T=2,0mm
Belt speed	: 7 mtr./min
Belt drive	: 0,6kW
Pump Type	: EBARA 3 40
Power	: 7,5 kW
<b>Water circulation through the washing nozzles</b>	<b>: 700 l/min</b>

# Industrial Washing machines

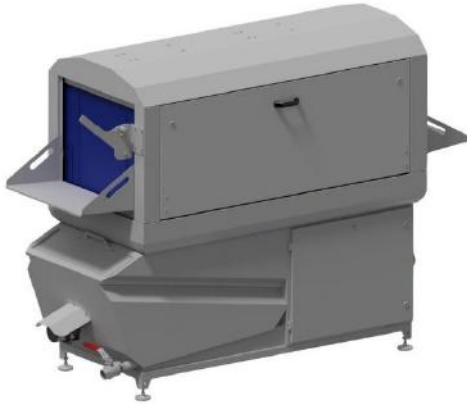


Water pressure at the nozzle	: 5,5 bar
Tank capacity	: 300 litre
Level monitoring	: 2 x Niveau sensor (min./max.)
Water consumption approx.	: 0,5 – 0,6 l/crate
Tank heating	: 4 x 9 kW – Electrical screw-in heater
Washing temperature	: 30- 55°C adjustable
Nozzle	: Clip-eyelet, rotatable flat jet nozzles
Filter system	: AISI 304 removable insert filter, 2mm perforation
Rinsing	: 1 x circumferential nozzle ring
Nozzle	: Brass flat jet nozzles
Rinsing temperature recommended	: 50 - 85 °C (provision by the customer)
Blower	: 2x 5,5 kW ELEKTOR High pressure (2x32m³/min)
Crate downholder	: Height adjustable
Directional control	: Integrated in the hold-down device
Conveying system	: transport chain with carrier
Electrical connection	: 400V / 50Hz, 3Ph + N + PE
Control voltage	: 24V
Total voltage	: 55 kW
Water connection	: 1/2" 1- 10 bar, cold or warm water
Tank overflow	: DN50
Tank emptying	: 1 x 1 ½ inch ball valve

**For available options, see the supplementary sheet from the HLCV. model series**



## HLCV Series



HLCV.



HLCV.-T



HLCV.3



HLCV.3-T

## Standard Options HLCV series

<p><b>3-position switch for belt speed / capacity</b></p>	
<p><b>Conductivity controlled metering pump for detergent</b></p>	
<p><b>Metering pump for rinsing aid</b></p>	
<p><b>Electrical flow heater for rinsing water 22,5kW</b></p>	
<p><b>One - man operation with return chute</b></p>	
<p><b>Vapor “ Extractor “ 2,2 kW with integrated stainless-steel piping 22,0 m³/min</b></p>	
<p><b>Roller conveyor, straight or with curve</b></p>	
<p><b>Pre-wash module with roller conveyor</b></p>	
<p><b>7,5 kW Pump for HLCV.3-400</b></p>	
<p><b>Additional Blower for HLCV.3-400</b></p>	

11,0 kW Pump for HLCV.3-600

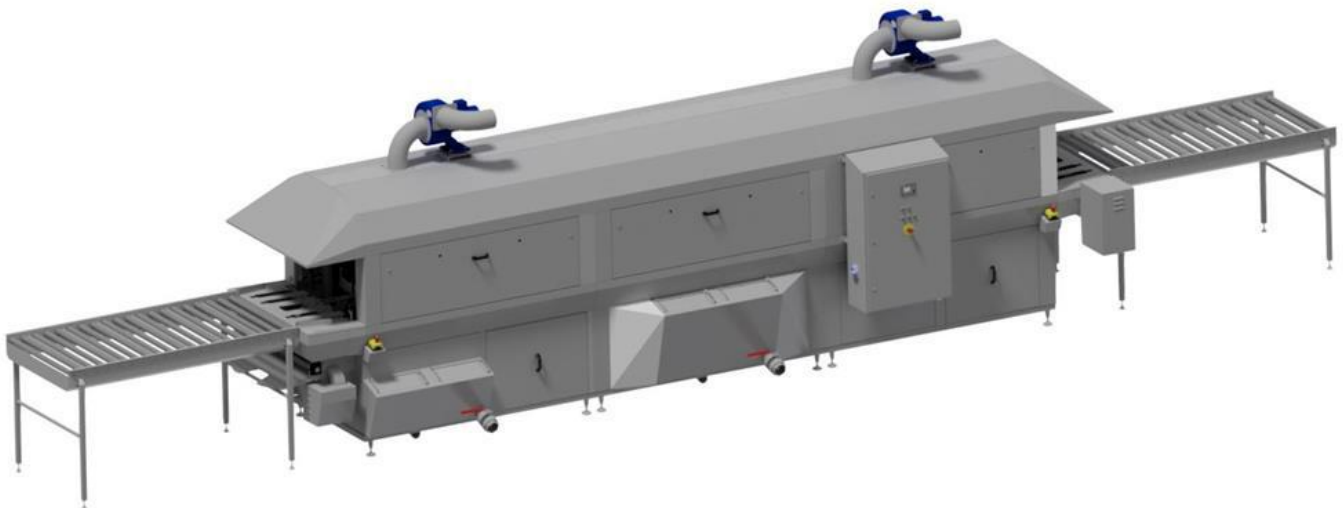


## Crate washer machines HLC Series

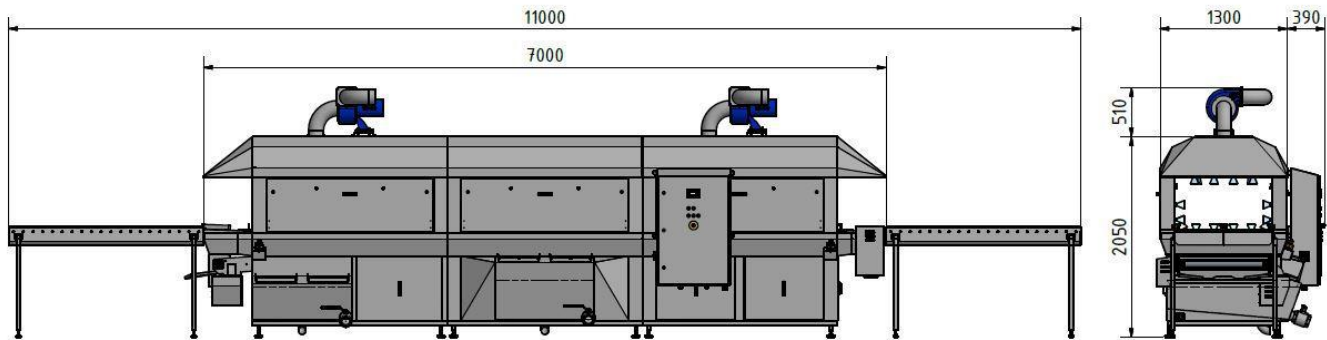
**HLC series for capacities up to 2500 containers / hour**

**Single lane, two lane or in combination with pallet cleaning.**

**Blow-off and drying modules with cold or hot air drying**



**Illustration with roller conveyor, Pre-wash module with belt filter, Main-wash module, Rinsing module.**



## Possible equipment of the HLC series

<b>Adjustable belt speed</b>
<b>Conductivity controlled metering pump for detergent</b>
<b>Metering pump 230VAC, for rinsing aid</b>
<b>Electrical flow heater for rinsing</b>
<b>Vapor " Extractor " 2,2 kW with integrated stainless-steel piping 22,0 m<sup>3</sup>/min</b>
<b>Steam heating</b>
<b>Stacking and de-stacking unit for containers</b>
<b>Spin- dryer unit</b>



